

Second Edition

America's College Museums

Handbook & Directory

Victor J. Danilov

GREY HOUSE PUBLISHING

PUBLISHER: Leslie Mackenzie
EDITORIAL DIRECTOR: Laura Mars
EDITORIAL ASSISTANT: Diana Delgado
PRODUCTION MANAGER: Kristen Thatcher
MARKETING DIRECTOR: Jessica Moody

AUTHOR: Victor J. Danilov
COMPOSITION: NPC, Inc.

Grey House Publishing, Inc.
4919 Route 22
Amenia, NY 12501
518.789.8700 FAX 845.373.6390
www.greyhouse.com
e-mail: books@greyhouse.com

While every effort has been made to ensure the reliability of the information presented in this publication, Grey House Publishing neither guarantees the accuracy of the data contained herein nor assumes any responsibility for errors, omissions or discrepancies. Grey House accepts no payment for listing; inclusion in the publication of any organization, agency, institution, publication, service or individual does not imply endorsement of the editors or publisher.

Errors brought to the attention of the publisher and verified to the satisfaction of the publisher will be corrected in future editions.

Except by express prior written permission of the Copyright Proprietor no part of this work may be copied by any means of publication or communication now known or developed hereafter including, but not limited to, use in any directory or compilation or other print publication, in any information storage and retrieval system, in any other electronic device, or in any visual or audio-visual device or product.

This publication is an original and creative work, copyrighted by Grey House Publishing, Inc. and is fully protected by all applicable copyright laws, as well as by laws covering misappropriation, trade secrets and unfair competition.

Grey House has added value to the underlying factual material through one or more of the following efforts: unique and original selection; expression; arrangement; coordination; and classification.

Publisher's Cataloging-In-Publication Data
(Prepared by The Donohue Group, Inc.)

Danilov, Victor J.

America's college museums : survey and descriptive directory of university & college museums, galleries & related facilities / Victor J. Danilov. -- 2nd ed.

p. : ill. ; cm.

First ed. published as: University and college museums, galleries, and related facilities. Westport, Conn. : Greenwood Press, 1996.

Includes bibliographical references and index.
ISBN: 978-1-59237-674-2

1. Museums--United States--Directories. 2. College museums--United States--Directories. 3. College museums--United States--History. I. Title. II. Title: University and college museums, galleries, and related facilities.

AM11 .D35 2011
061/.3

Copyright © 2011 Grey House Publishing Inc.
Second Edition

All rights reserved
Printed in the USA

Contents

Preface	ix
Introduction	xi
Chapter 1: An Overview and History	1
Early Collections and Museums	3
Twentieth Century Expansion	7
Mid-Century War and Ensuing Expansion	9
Surge of Historical and Library Museums	12
Continued Science Growth	17
Changing Campus Conditions	22
A Challenging Future	25
Chapter 2: Types of Institutions	29
Museums of Art and Sculpture	30
Art Museums	30
Sculpture Gardens	32
Art Galleries	33
Science Museums and Related Facilities	35
Natural History Museums	35
Archaeology, Anthropology, and Ethnology Museums	37
Entomology Museums	39

Zoology Museums	40
Paleontology Museums	41
Geology and Mineralogy Museums	42
Botanical Gardens, Arboretums, Herbariums, and Nature Centers	43
Science and Technology Museums and Centers	46
Planetariums and Observatories	47
Marine Sciences Museums and Aquariums	49
Medical, Dental, and Health Museums	50
Historically-oriented Museums and Galleries	52
Historical Museums, Houses, and Sites	52
Ethnic Museums and Galleries	55
Religious Museums and Galleries	57
Agricultural Museums	58
Costume, Textile, and Fashion Museums	59
Music Museums	60
Photography Museums and Galleries	61
Sports Museums	62
General Museums	63
Library and Archival Collections and Galleries	64
Other Types of Museums	66
Chapter 3: Governance, Organization, and Staffing	67
Governance Patterns	68
Management Structures	70
Museum Groupings	72
Informal Cooperation	73
Organization and Staffing	74
Operating Practices	76
Differences of Opinion	77
Chapter 4: The Mission	81
Art Museums and Galleries	82
Science Museums and Related Facilities	84
Other Fields	87
Chapter 5: Collections and Research	91
Art Collections	91
Millions of Specimens and Objects	94

Collections in Other Fields	99
Chapter 6: Exhibits and Programs	105
Collection-Based Exhibits	106
Historical and Contemporary	110
Educational Programming	111
Chapter 7: Facilities and Attendance	115
The Old and the New	115
Smaller, but More Numerous	118
Interpreting History	120
Hands-off and Hands-on Exhibits	125
Campus and Public Response	131
Chapter 8: Closures and Openings	137
Finances and Other Reasons	138
Many New Facilities	139
Greater Cost Control	140
Index for Chapters 1-8	141
Photographs	167
Directory of Museums	189
Agricultural Museums	189
Archaeology, Anthropology, & Ethnology Museums	193
Art Galleries	209
Art Museums & Sculpture Gardens	301
Botanical Gardens, Arboretums, Herbariums, & Nature Centers	364
Costume, Textile, & Fashion Museums	389
Entomology Museums	395
Ethnic Museums & Galleries	398
General Museums	411
Geology & Mineralogy Museums	416
Historical Museums & Houses	427
Library & Archival Collections & Galleries	458
Marine Sciences Museums & Aquariums	468
Medical, Dental, & Health Museums	470
Music Museums	477

Natural History & Cultural Museums	479
Paleontology Museums	498
Photography Museums and Galleries	501
Planetariums, Observatories, & Astronomical Museums	504
Religious Museums and Galleries	539
Science & Technology Museums & Centers	546
Sports Museums	552
Zoology Museums	557
Other Types of Museums	560
Indices for Directory	
University and Museum Index	563
Museum and University Index	581
Geographic Index	595
Key Personnel Index	615
Appendices	
1: Founding and Opening Dates	635
2: Bibliography	683

Preface

Museums, galleries, and related facilities at American universities and colleges play an important cultural role on academic campuses and their communities and regions. They serve as informal instruments of education with their exhibits and programs; keepers and researchers of artworks, specimens, and historical objects; and sources of enjoyment in the art, science, history, and other fields. They are invaluable resources in instruction, research, and public education.

This study looks at the history, operations, and offerings of 1,736 museums, galleries, libraries, planetariums, observatories, science centers, sculpture gardens, aquariums, botanical gardens, arboretums, herbariums, nature centers, and other museum-like facilities located at 822 universities, colleges, and related organizations. This volume is an update on a similar study of more than 1,100 facilities published in 1996. They represent about 10 percent of the nation's museum world.

Some of the nation's earliest collections and museums in the eighteenth and nineteenth centuries were at such university and college campuses at the College of William and Mary, Dartmouth College, Georgetown University, U.S. Military Academy, and Harvard University.

Many of the best-known and highly regarded museums, galleries, and related facilities today are located on university and college campuses, including such places as the Harvard Art Museum; University of Pennsylvania Museum of Archaeology and Anthropology; Yale University Art Gallery; Birch Aquarium at Scripps at the University of California, San Diego; Oriental Institute Museum at the University of Chicago; Hammer Museum at the University of California, Los Angeles; and Lyndon Baines Johnson Library and Museum at the University of Texas at Austin.

The number and quality of academic museum-like institutions keeps increasing, despite difficult economic conditions. But some have closed and other have made cutbacks in recent years for financial and other reasons. This study shows the diversity, strength, and importance of academic museums, galleries, and related facilities, as well as some of the problems they face in the years ahead. I wish to thank all those who helped to make this overview possible.

Introduction

America's College Museums was first published in 1996 by Greenwood Publishing Group as *University and College Museums, Galleries, and Related Facilities: A Descriptive Directory*. This second edition is completely revised with more educational information, more museum listings, and five indices. It is arranged in two major sections.

College Museums: Remarkable & Important Cultural Resources

The first section of *America's College Museums* is a comprehensive overview, in eight distinct chapters, of the workings of college museums — governance, funding, programming, admissions, and collection development. The author explores how these institutions continue to thrive, and how they develop and house remarkable, valuable, and diverse collections. Many college museums are on the forefront of scientific research, and most serve not only as an important educational center for the student population, but also as a bridge to outside communities. Collections vary from a few display cases to significant buildings that house major collections and valuable works of art.

This new edition begins with a comprehensive history of America's college and university museums. You will read about how the first academic art collection was started in 1732 at the College of William and Mary when the third Earl of Burlington gave the college a portrait of physicist Robert Boyle. Other starting dates include the first military collection at the U.S. Military Academy in 1777 and, in 1784, the first geological collection at Harvard University.

This section discusses more than 25 different types of institutions, including Art Museums, Archaeology Museums, Science Centers, Health Museums, Music Museums, Sports Museums, and Archival Galleries. It includes governance patterns and management structures, details on missions and objectives, and dwindling collections at many facilities.

The different kinds of exhibits, almost always with a focus on education — as well as which attract the most attendance — are also included in this edition. From talks and lectures to camps and field trips, exhibits vary greatly. Some are collection-based, some focus on contemporary research, and some depend on changing student work.

Finally, this section ends with commentary about the future. Despite economic challenges, the total number of academic galleries, museums and related facilities continues to increase every year — emphasizing “the importance of such art, history and science facilities in teaching, research and the cultural life on campus.”

Following Chapter 8 is a list of the 26 photographs in this edition of various museums and galleries, with detailed captions.

Chapter 1

An Overview and History

“Museums” once had a narrow definition. They had to have collections of artworks, specimens, historical materials, or other objects; a professional staff; exhibits; and open to the public on a regular schedule. Today, museums take many different forms—and often with other names. This is especially true on the campuses of American colleges and universities where some have such unusual museum names as Idea Place, Discovery Zone, and Insect Zoo.

The word “museums” now is used as an umbrella term that includes such museum-like facilities as art galleries, science centers, planetariums, observatories, aquariums, zoos, botanical gardens, arboretums, herbariums, nature centers, and library collections, archives, and exhibits with museum characteristics. Some lack collections, do not have exhibits, are not open to the public, lack professional staffs, and/or do not call themselves museums.

Virtually every type of museum can be found on the collegiate campus—and sometimes at other locations operated by universities and colleges. This study includes descriptions of 1,739 museums and related facilities at 825 universities, colleges, and related organizations in the United States—nearly 10 percent of the approximately 17,500

museums are in science— entomology; geology and mineralogy; marine sciences; medicine, dentistry, and health; paleontology; science and technology; and zoology.

Academic museums were among the first museums, galleries, and related fields in the United States. Their collections and exhibits began in the 1700s and early 1800s, and now represent almost 10 percent of the museums and similar facilities in the nation. The various types are described in this chapter.

MUSEUMS OF ART AND SCULPTURE

Art Museums

University and college art museums basically are institutions that collect, preserve, exhibit, and interpret permanent collections of art. The artworks most often consist of paintings, prints, drawings, and sculpture, but also frequently include decorative arts, photographs, ceramics, furniture, costumes, textiles, design, silver, glass, jade, metalwork, engravings, jewelry, antiquities, and/or other works. Art museums—which number 242 in this study—also usually present temporary exhibitions and public programs and often are used for teaching and research.

Art museums are among the oldest, largest, and best known, attended, and supported campus museum? Many have extensive collections and exhibits, beautiful sculpture gardens or courts, and/or new buildings underwritten by private individuals, while others are relatively small, are more narrowly focused, and/or occupy some of the most historic buildings at colleges and universities. Not all have “museum” in their names; some are called galleries, collections, art centers, or other names.

Art collections and museums were among the first cultural collections and facilities at American universities and colleges. The first academic collection began in 1732 at the College of William and Mary when the third Earl of Burlington gave the college a portrait of physicist Robert Boyle. It was followed in 1772 by gifts of artworks to Dartmouth College. Many began as institutional, teaching, or research collections that later evolved into museums—frequently many years after the collections began. At Dartmouth College, for example, it was not until 1974 that several collections were consolidated to form a museum that became the Hood Museum of Art in 1985. The first collections of the Bowdoin College Museum of Art originated in 1811. However, the museum was not formalized until 1894.

The nation's first art school and art museum were founded in 1805 in Philadelphia. The Museum of American Art is still at the Pennsylvania Academy of the Fine Arts, but its name now is the Pennsylvania Academy of the Fine Arts Museum. Among the other early efforts were the Trumbull Gallery (which later developed into the Yale University Art Gallery), established in 1832 at Yale University; a collection of engravings used to illustrate classical antiquity lectures in 1855 that eventually led to the establishment of the

an informal group that meets to discuss issues of common interest, particularly marketing, at the University of California, Berkeley; periodic meetings of museum conservators at Indiana University, where campus museums also belong to the Alliance of Bloomington Museums; an ad hoc consortium of university and city museums and related facilities at the University of Michigan; and a five-college consortium that includes representatives of museums and galleries at Amherst College, Hampshire College, Mount Holyoke College, Smith College, and the University of Massachusetts.

ORGANIZATION AND STAFFING

Most museums, galleries, and related facilities at universities and colleges have relatively simple organizational structures and rather small staffs. Since few museum-like facilities have their own governing boards, nearly all the directors are appointed by and report to an academic department chairperson; the dean of the college to which the facility is attached; a campuswide senior administrator, such as the provost, vice president, vice chancellor, or president; or the director of the library, arts center, student union, or other building where the museum or gallery is located.

The director frequently is the only full-time museum or gallery staff member, with other staff members often being part-time people—such as curators from the academic department or college faculty, office help, volunteers, and work/study students, interns, and other students. It is only in the larger institutions that there are more extensive organizational structures and staffs resembling those of their nonacademic counterparts.

The smallest staffs—usually one to four full-time and/or part-time people—are found at art galleries, historical facilities, planetariums, and small specialized museums and related facilities. They generally include a director/curator, a secretarial/clerical assistant, and collections, exhibits, and/or other personnel. Faculty members also may be involved from a curatorial standpoint, and students may be used to assist with the research, mounting, maintenance, security, and/or other such functions. Some facilities do not have any full-time staff members.

Most art galleries do not have a need for large staffs. Since many galleries do not have collections, it is not necessary to assemble or care for collections, and the exhibition spaces usually are under several thousand square feet and can be manned by a single person, generally a student, intern, or volunteer. The full-time staff often consists only of the gallery director, and sometimes there is no full-time director, with gallery being directed by the head of the art department, as occurs at the Western Kentucky University Gallery. At Goucher College's Silber Gallery, the gallery is directed by the college's exhibitions and collections coordinator.

The only staff member at Ray Drew Gallery at New Mexico Highlights University is the director. Some galleries have interns to assist with gallery operations, as at the Macalester

Chapter 4

The Mission

Academic museums, galleries, and related facilities have written or unwritten objectives known as “missions.” They usually are different from those of public, private, and government sites in the community at large, and even from other campus museums and related facilities. The objectives often are given in mission statements. The purpose sometimes is described in a single sentence, while the statements contain more objectives at other times. Regardless of the length, the intent is the same—to explain the purpose of the institution.

Academic museums and related facilities generally differ from similar non-academic operations in that they basically are internally focused on the teaching, research, and enjoyment of the academic community, rather than serving the general public. However, most also invite the public to their offerings. Campus museums and related facilities also usually differ in funding, control, function, staffing, and educational role. They normally are not funded to make a profit, but rather to be subsidized by the university or college, hopefully with some support from donors. Most places are part of academic departments, usually overseen by faculty members, and containing collections and exhibits used in instruction and/or research. Some of the larger facilities have a professional staff, while others rely on student assistance. The objectives vary from collecting, preserving,



The Birch Aquarium at Scripps, a part of the Scripps Institution of Oceanography at the University of California, San Diego, has extensive exhibit, education, and research programs. The aquarium, founded in 1903, contains more than 5,000 animals representing 380 species and has about 60 tanks of Pacific fishes and invertebrates. This photo shows the aquarium's seaside site in La Jolla. *Courtesy of Birch Aquarium at Scripps, University of California, San Diego.*

Other science centers with interactive exhibits include the Lawrence Hall of Science, which presents an overview of the major sciences with hands-on exhibits and activities, University of California, Berkeley; UA Science: Flandrau, which began as a planetarium and now features interactive science exhibits at the University of Arizona; Da Vinci Science Center, located at Cedar Crest College, which seeks to develop young people's curiosity, imagination, and creativity in the sciences; and Idea Place, dedicated to awakening the excitement of learning through interactive exploration of scientific phenomena, Louisiana Tech University. The MIT Museum at Massachusetts Institute of Technology combines historical objects with interactive exhibitry in inviting the public to explore invention, ideas, and innovation. Some planetariums also have astronomical science centers that combine artifacts and hands-on exhibits, such as the Cernan Earth and Space Center at Triton College, Coca-Cola Space Science Center at Columbus State University, and Fiske Planetarium and Science Center at the University of Colorado at Boulder.

EDUCATIONAL PROGRAMMING

Some form of educational programming is offered by almost every academic museum and related facility. Among the most common programs are school programs, guided tours, and gallery talks. Other programs include art or science classes, teacher workshops, films and videos, lectures, science demonstrations, summer camps, field trips, symposia, publications, concerts, travel tours, special events, outreach programs, and online offerings.

The Yale Center for British Art has one of the most comprehensive educational programs. It includes school group tours, teacher workshops, children and family programs, adult classes and workshops, lectures by scholars and artists, classic and contemporary films and concerts, and online exhibitions and programs. The museum describes the role of its school and teacher programs as providing “opportunities to engage actively with works of art, stimulate inquiry and discussion, and foster critical looking and thinking skills.” Boston College’s McMullen Museum of Art often seeks to reach beyond traditional art history, providing political, historical, and cultural context. It offers such exhibit-related programming as musical and theatrical performances, films, gallery talks, symposia, lectures, readings, and receptions to stimulate dialogue.

At the Lawrence Hall of Science at the University of California in Berkeley, more than 22,000 teachers participate in the museum’s professional development programs each year. The science center also offers classes, workshops, and science shows for students at the museum and schools. Among the other educational programs are science day camps, home school classes, and science and math classes for preschool children and parents at local libraries and the museum. In addition, Lawrence Hall of Science has science demonstrations, opportunities to interact with animals, and planetarium educational

HANDS-OFF AND HANDS-ON EXHIBITS

Science museums range from collection-based research museums closed to the public to contemporary science centers without collections. The collections of “hands-off” specimens and objects in laboratories and storage areas are the exhibits at some museums, while others offer “hands-on” interactive experiences. Among those museums that are open only to researchers are the Essig Museum of Entomology at the University of California, Berkeley, which has a collection of 4.5 million insects and terrestrial arthropods; Museum of Vertebrate Zoology at the University of California, Berkeley, with a collection of over 640,000 amphibians, birds, mammals, reptiles, and other specimens (has one open house a year); University of Michigan Museum of Anthropology, which has more than 3 million anthropological, archaeological, and ethnographic objects in its collection (but offers online exhibits); and Harvard University Herbaria, with over 5 million dried plant specimens—the most in the world. The University of California Museum of Paleontology at Berkeley, which does not have exhibits, is located in a building with lobby and hallway dinosaur exhibits, tours, and an annual open house. The Museum of Paleontology at the University of Michigan also is closed to the public, but it curates fossil exhibits at the university’s Exhibit Museum of Natural History.

Most collection-oriented science museums are open to the public. The Entomology Research Museum, with about 3 million specimens, has a dozen display cases with exotic insects at the University of California, Riverside; the College of Eastern Utah Prehistoric Museum has a Hall of Dinosaurs with fossil skeletons and an archaeological hall with mammoth figurines and artifacts; and the Museum of Comparative Zoology at Harvard University displays specimens from its collection of approximately 21 million extant and fossil invertebrate and vertebrate specimens in the Harvard Museum of Natural History complex. The University of Nebraska State Museum is best known for its Elephant Hall that contains mounted skeletons of 12 elephants, mammoths, mastodons, and ancestral proboscideans, two life-size mounts of African elephants, and other exhibits. Two institutions have specific public-oriented facilities called “zoos”—Kansas State University Insect Zoo, a former dairy barn featuring giant cockroaches, beetles, praying mantises, scorpions, and other insects; and the Santa Fe Community College Teaching Zoo, a diverse outdoor collection of mammals, birds, reptiles, and amphibians. The University of Wyoming has an Insect Museum, which has a collection of over 250,000 insects and two specialized galleries—on live native and exotic insects and another on tropical plants and insects. Another popular attraction is the 6,400-square-foot walk-through Butterfly Rainforest at the Florida Museum of Natural History.

Yale Peabody of Natural History, one of the oldest and largest natural history museums in the world, has over 20 million specimens and objects. It is best known for its Great Hall that contains skeletons from its renowned paleontology collection. The Peabody Museum of Archaeology and Ethnology at Harvard University, which has one of

Cultural Center, University of Arkansas at Pine Bluff, 2005; Crisp Museum, Southeast Missouri State University, 2007; and Avenir Museum of Design and Merchandising, Colorado State University, 2008.

New science facilities since the turn of the century include the Sam Noble Oklahoma Museum of Natural History, University of Oklahoma, and Oesper Museum of Chemical Apparatus, University of Cincinnati, 2000; Weis Earth Science Museum, University of Wisconsin-Fox Valley, and Emory University Planetarium and Observatory, 2002; Oscar E. Monnig Meteorite Gallery, Texas Christian University, and Da Vinci Science Center, Cedar Crest College, 2003; University of Washington Botanic Gardens, 2005; Museum of Biodiversity, University of Notre Dame, and 'Imiloa Astronomy Center of Hawaii, University of Hawaii at Hilo, 2006; University of Arkansas Discovery Zone, 2007; and Michael E. DeBakey Library and Museum, Baylor University, 2010.

GREATER COST CONTROL

Museums, galleries, and related facilities continue to be closed and opened at colleges and universities, with the total number increasing each year, despite lagging economic conditions. This testifies to the importance of such art, history, and science facilities in teaching, research, and the cultural life on the campus, and their ability to find the necessary institutional resources and support funds from government, foundation, and private sources.

What does the future hold? That is the question facing all academic museums, galleries, and related facilities. As funding becomes more difficult, greater cost control will become necessary. The administrators and department heads of colleges and universities—as well as state legislatures, local officials, and donors—already are seeking to get more out of less. Some closings and cutbacks already have occurred because of budget problems—and more are likely until the economy rebounds.

For the larger and more popular museums, galleries, libraries, planetariums, observatories, botanic gardens, arboretums, and other facilities, this could mean such cost-cutting measures as personnel reductions, less staff travel, fewer additions to collections, more limited research, fewer or less expensive exhibitions and programs, reduced open hours, and/or the imposition or increases in admission fees. The smaller—and usually less attended museums and other facilities—it could mean many of the same cutbacks—as well as closure. All will be called upon to do a better job of justifying their existence and controlling costs.

It will be more difficult to maintain or improve the quality of a museum, gallery, or related facility during economic hard times, as well as finding the funds to launch new institutions. But most universities and colleges have made such adjustments in the past, and are likely to do so again.

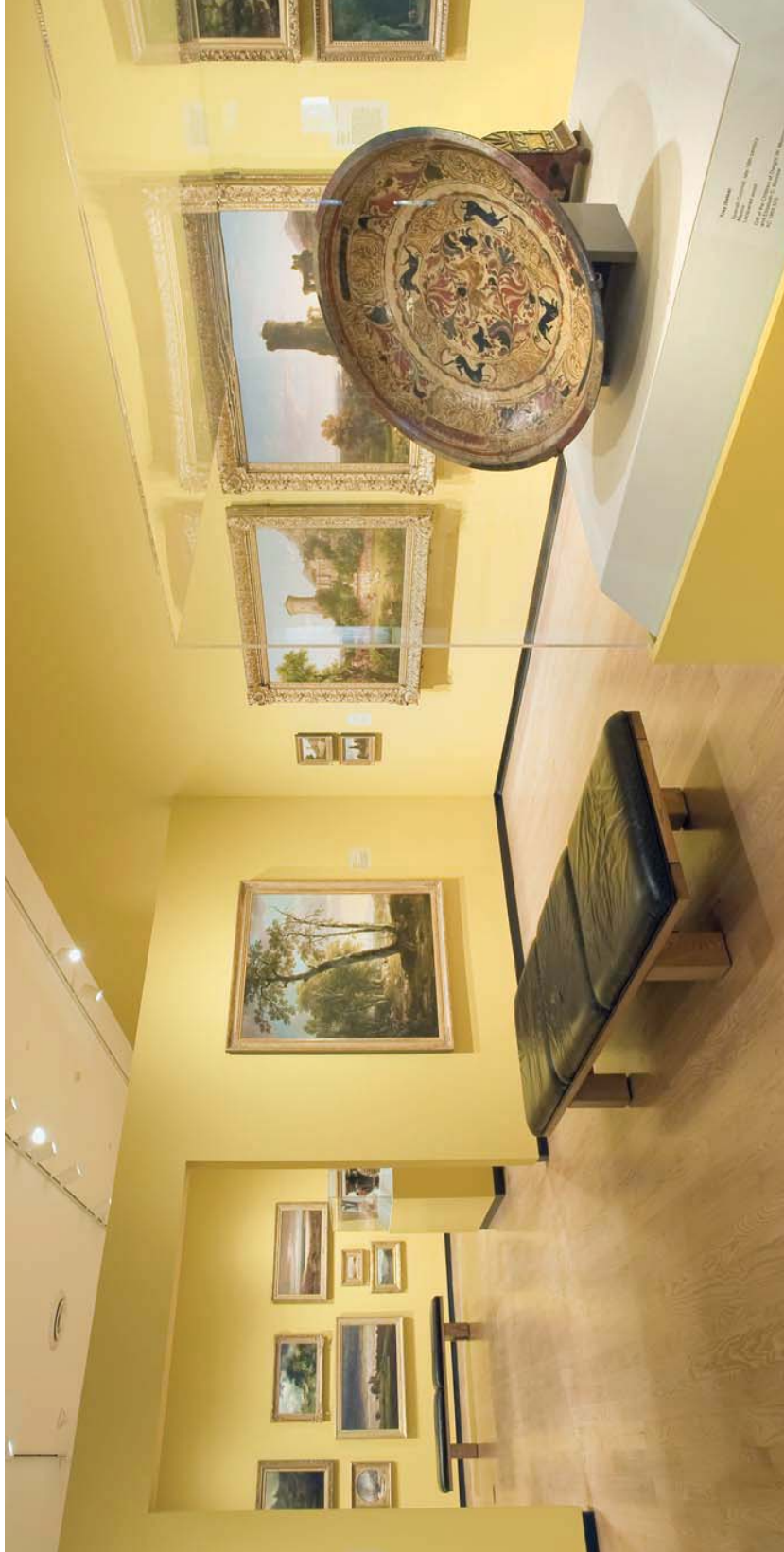
Index / Chapters 1-8

A

- A. D. Buck Museum of History and Natural Sciences, 23
- A. E. Seaman Mineral Museum, 42-43, 126
- Aaron Douglas Gallery, 124
- Abraham Lincoln Museum, 54
- Abrams Planetarium, 21, 48, 97-98, 131
- Admission fees, 133-135
- Advisory committees, 69-70, 76
- African American Museum and Gallery, 16
- African American museums and galleries, 16, 55-56, 122-123
- African Art Gallery/Harrison B. Wilson Archives and Art Gallery, 9
- Agassiz, Louis, 36, 40
- Agricultural museums, 2, 14, 16, 29, 58-59, 102
- Alabama Museum of Natural History, 3, 5, 126
- Alabama Museum of the Health Sciences, 51
- Alabama Museum of Natural History, 3, 5
- Alabama State Black Achievers Research Center and Museum, 55
- Alaska Museum of the North, 134
- Albion College, 45, 110
- Allen Memorial Art Museum, 8, 113, 116
- American Association of Museums, 2
- American Museum of Asmat Art, 14, 64
- American University, 24
- American Heritage Center, 64, 69-70, 134
- American University Museum at the Katzen Arts Center, 24
- American West Heritage Center, 9, 12, 16, 54-55, 58, 64, 69-70
- American Work Horse Museum, 138
- Amherst College, 5, 8, 10, 12, 14, 36, 65, 74, 100, 109, 112-113, 121, 124, 139
- Amherst College Museum of Natural History, 5, 109
- Amistad Research Center, 16, 55, 103, 122-123
- Anderson Gallery, 34

Photographs

Pennsylvania Academy of the Fine Arts Museum	4
University of Pennsylvania Museum of Archaeology and Anthropology	6, 169
George Bush Presidential Library and Museum at Texas A&M University	15
Burke Museum of Natural History and Culture at the University of Washington ..	38
The Rotunda at the University of Virginia	53
Harvard Art Museums	92
Birch Aquarium at Scripps at the University of California, San Diego	98, 182
Wexner Center for the Arts Galleries at Ohio State University	170
Mead Art Museum of Amherst College	171
Hammer Museum at the University of California, Los Angeles	172
Blanton Museum of Art at the University of Texas at Austin	173
State Botanical Garden of Georgia at the University of Georgia	174
Morris Arboretum of the University of Pennsylvania	175
The Design Center at Philadelphia University	176



The Mead Art Museum at Amherst College has a collection of more than 16,000 works of art, distinguished for its American and European Old Masters, English Baroque period room, and ancient Assyrian carvings. This photo shows part of one of its eight galleries that feature changing and special exhibitions on a wide range of historical periods, national schools, and artistic media. *Courtesy Mead Art Museum, Amherst College.*

Agricultural Museums

DELAWARE VALLEY COLLEGE

Roth Living Farm Museum North Wales, Pennsylvania

The Roth Living Farm Museum, operated by the Delaware Valley College near North Wales, Pennsylvania, seeks to further public understanding of farming and appreciation for American agriculture by demonstrating nineteenth and early twentieth-century farming practices. Visitors can see farm animals, historical farm equipment; seasonal planting, milking, and sheep shearing; participate in such hands-on activities as butter and cheese making, egg collecting, corn grinding, and doing the laundry; and go for horse-drawn wagon rides. The attendance is 1,100 annually.

Roth Living Farm Museum of Delaware Valley College, Rte. 202 and Hancock Rd., North Wales, PA 19454. Phone: 215/699-3994. E-mail: rothmuseum@delval.edu. Web site: www.delval.edu/roth. Hours: May-Oct.-1-4 on 9 Saturdays; closed remainder of year, except for groups on appointment basis. Admission: free.

Russell Redding, DVC Dean of Agriculture and Environmental Sciences

FERRUM COLLEGE

Blue Ridge Farm Museum Ferrum, Virginia

The Blue Ridge Farm Museum, part of the Blue Ridge Institute and Museum at Ferrum College in Ferrum, Virginia, is devoted to the folk heritage of the Blue Ridge region. It is a living history farm that re-creates an 1800 Virginia-German farmstead where visitors can experience the early rural life in the region. Costumed interpreters carry out household and farm chores of the period every weekend during the summer. Other aspects of the Blue Ridge Institute and Museum, which serves as the State Center for Blue Ridge Folklore, are museum exhibits, academic programs and research, documentary television productions, school presentations, and festivals. The annual attendance is 15,000.

Blue Ridge Farm Museum, Blue Ridge Institute and Museum, Ferrum College, 20 Museum Dr., PO Box 1000, Ferrum, VA 24088. Phone: 540/365-4416. Fax: 540/365-4419. E-mail: bri@ferrum.edu. Web site: blueridgeinstitute.org. Hours: mid-May-mid-Aug.-10-5 Sat., 1-5 Sun.; closed major holidays and remainder of year. Admission: grounds-free; farm tours-adults, \$5; seniors and children 6-15, \$4; children under 6, free.

Roddy Moore, Director
rmoore@ferrum.edu

IOWA STATE UNIVERSITY

Farm House Museum Ames, Iowa

A circa 1860-64 farmhouse that was the first building on the campus of Iowa State University in Ames is the site of the Farm House Museum. Volunteers from neighboring communities built the three-story structure two years after the state legislature passed a measure calling for the establishment of a state agricultural college and model farm. It was the first building in the nation's first state to accept the Morrill Act establishing land grant colleges. The college president, agricultural deans, faculty members, and farm managers lived in the house at various times during the early days before it was used for other purposes.

The museum offers visitors a view into life in Iowa and at the university in the late 1800s and early 1900s. It contains period decorative arts, furnishings, and material culture and provides opportunities to learn about such things as soap making techniques and the lifestyle of Victorian-era farm children. The historic house has 6,000 visitors a year.

Farm House Museum, Farm House Lane, Iowa State University, Ames, IA 50011-0001 (postal address: University Museums, Iowa State University, 290 Scheman Bldg., Ames, IA 50011-0001). Phone: 515/294-3342. Fax: 515/294-3342. Web site: www.museums.iastate.edu. Hours: 12-4 Mon.-Fri. by appointment; closed university holidays and breaks. Admission: free.

Lynette Pohlman, Director and Chief Curator 515-294-3342
lpohlman@iastate.edu

LOUISIANA STATE UNIVERSITY

Rural Life Museum and Windrush Gardens Baton Rouge, Louisiana

The lifestyles and cultures of pre-industrial Louisiana are featured at the Rural Life Museum and Windrush Gardens at Louisiana State University's Burden Research Plantation, an agricultural research experiment station in Baton Rouge. The museum has three sections: Plantation Quarters, a complex of authentically furnished buildings that reflect life on a typical nineteenth-century working plantation; Exhibit Barn, featuring hundreds of artifacts relating to everyday rural life from prehistoric times to the early twentieth century; and Louisiana Folk Architecture, which has seven structures of divergent construction traits illustrating the various cultures of Louisiana settlers.

The museum was founded in 1970 by the Burden family. It uses its historic buildings and extensive collection of tools, utensils, furniture, farming equipment, and other materials to interpret the rural heritage of Indians, Acadians, French, Spanish, English, Germans, and African Americans under the 10 flags that have flown over Louisiana. The historic

A

- A. T. Still University**
Museum of Osteopathic Medicine, 470
- Adams State College**
Luther Bean Museum, 193
Zacheis Planetarium and Observatory, 504
- Agnes Scott College**
Bradley Observatory and Delafield Planetarium, 504
Dalton Gallery, 209
- Alabama A&M University**
Alabama State Black Archives Research Center and Museum, 398
- Albion College**
Bobbitt Visual Arts Center, 209
Whitehouse Nature Center, 364
- Albright College**
Freedman Gallery, 209
- Allegheny College**
Bowman Gallery, Penelec Gallery, and Megahan Gallery, 209
- American University**
Museum at the Katzen Arts Center, 301
- Amherst College**
Bassett Planetarium, 504
Beneski Museum of Natural History, Amherst College, 479
Emily Dickinson Museum: The Homestead and The Evergreens, 427
Folger Shakespeare Library, 458
Mead Art Museum, 301
Wilder Observatory, 504
- Anderson University**
Gustav Jeeninga Museum of Bible and Near Eastern Studies, 539
Jessie C. Wilson Art Galleries, 209
- Andrews University**
Siegfried H. Horn Museum, 193
- Angelo State University**
Global Immersion Center, 504
- Anna Maria College**
Art Center Gallery at Miriam Hall, 210
- Anne Arundel Community College**
Herbarium at Anne Arundel Community College, 364
- Antioch College**
Glen Helen Nature Preserve, 364
- Appalachian State University**
Appalachian Cultural Museum, 427
F. Kenneth and Marjorie J. McKinney Geology Teaching Museum, 416
- Arcadia University**
Arcadia University Art Gallery, 210
- Arizona State University**
Arizona State University Planetarium, 505
Art Museum, 301
Center for Meteorite Studies Museum, 416
Deer Valley Rock Art Center, 193
Herberger Institute for Art and Design, 210
Mars Space Flight Facility, 505
Museum of Anthropology, 193
Night Gallery, 501
Other Art Galleries, 210
R. S. Dietz Museum of Geology, 416
Space Photography Laboratory, 501
University Arboretum, 364
- Arkansas State University**
Arkansas State University Museum, 411
Fine Arts Center Gallery and Bradbury Gallery, 211
Hemingway-Pfeiffer Museum and Educational Center, 427
- Arkansas Tech University**
Arkansas Tech University Museum, 427
- Art Institute of Boston**
Main Gallery and Gallery at University Hall, 211

- Associated Universities, Inc.**
National Radio Astronomy Observatory and other observatories, 505
- Association of Universities For Research In Astronomy**
National Optical Astronomy Observatory and other observatories, 506
- Auburn University**
Jonathan B. Lovelace Museum and Hall of Honor, 552
Jule Collins Smith Museum of Fine Arts, 301
- Augustana College**
Carl Gamble Observatory, 506
John Deere Planetarium, 506
- Augustana College (Illinois)**
Art Museum, 302
Fryxell Geology Museum, 416
- Augustana College (South Dakota)**
Center for Western Studies, 428
Eide/Dalrymple Gallery, 211
- Aurora University**
Schingoethe Center for Native American Cultures, 398
- Austin Peavy State University**
Margaret Fort Trahern Gallery, 211
- Avila University**
Thornhill Gallery, 212

B

- Bacone College**
Ataloo Lodge Museum, 398
- Baker University**
Old Castle Museum, 428
Quayle Bible Collection, 539
- Ball State University**
Art Museum, 302
Ball State Planetarium and Observatory, 506
Field Station and Environmental Education Center, 365
- Baltimore School For the Arts**
Alcazar Gallery, 212
- Bard College**
Gallery at the BGC, 212
Hessel Museum of Art and CCS Galleries, 302
- Barry University**
Andy Gato Gallery, 212
- Barton College**
Barton Art Galleries, 303
- Barton County Community College**
Shafer Gallery, 212
- Baruch College, City University of New York**
Sidney Mishkin Gallery, 213
- Bates College**
Museum of Art, 303
- Baylor University**
Armstrong Browning Library, 458
Art Gallery, 213
Martin Museum of Art, 303
Mayborn Museum Complex, 479
Michael E. DeBakey Library and Museum, 470
- Beloit College**
Logan Museum of Anthropology, 194
Wright Museum of Art, 303
- Benedict College**
Ponder Fine Arts Gallery, 213
- Benedictine University**
Jurica-Suchy Nature Museum, 479
- Bennington College**
Suzanne Lemberg Usdan Gallery, 213

Appendix 1

Founding and Opening Dates

- 1732 College of William and Mary, Williamsburg, VA (collection started)
- 1772 Hood Museum of Art, Dartmouth College, Hanover, NH (collection started)
- 1789 Georgetown University Art Collection, Washington, DC (collection started)
- 1807 Pennsylvania Academy of the Arts Museum, Philadelphia, PA
- 1819 The Rotunda, University of Virginia, Charlottesville, VA
- 1832 Yale University Art Gallery, New Haven, CT
- 1834 Haverford College Arboretum, Haverford, PA
- 1839 Harvard College Observatory, Harvard University, Cambridge, MA
- 1842 The Citadel Archives and Museum, The Citadel, The Military College of South Carolina, Charleston, SC
- 1845 U.S. Naval Academy Museum, Annapolis, MD
- 1847 Alabama Museum of Natural History, University of Alabama, Tuscaloosa, AL
Warren Anatomical Museum, Harvard University, Cambridge, MA
- 1848 Amherst College Museum of Natural History, Amherst, MA

Appendix 2

Selected Bibliography

- Adlmann, Jan Ernest. "Museums in Academic Garb" (report on two symposia held at Vassar College). *Museum News*, Vol. 67, No. 2, 1988, p. 46.
- Alexander, Edward P., and Mary Alexander. *Museums in Motion: An Introduction to the History and Functions of Museums*. 2nd ed. Lanham, MD: AltaMira Press/American Association for State and Local History, 2007.
- American Association of Museums. "Toward Working with University Natural History Museums." *Curator*, Vol. 15, No. 2, 1992, pp. 93-94.
- _____. *Museum Job Descriptions and Organizational Charts*. Washington: American Association of Museums, 1999.
- Ames, Kenneth L., Barbara Franco, and L. Thomas Frye. *Ideas and Images: Developing History Exhibits*. Lanham, MD: AltaMira Press/American Association for State and Local History, 1992.
- Association of Art Museum Directors. *2010 AAMD Salary Survey* New York: Association of Art Museum Directors, 2011.