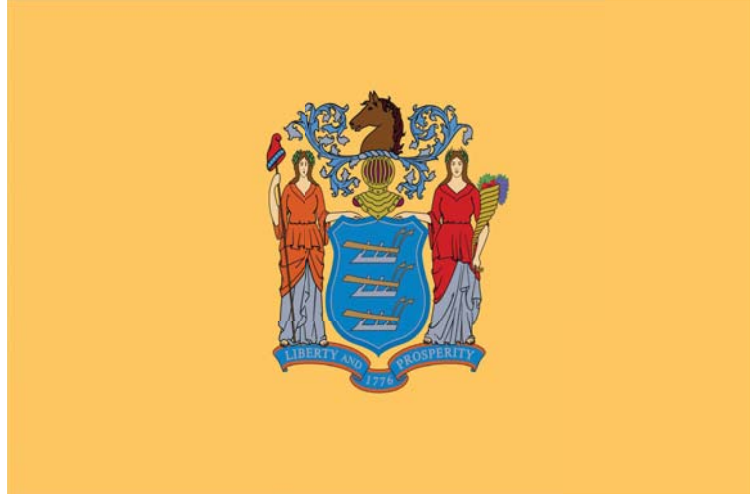
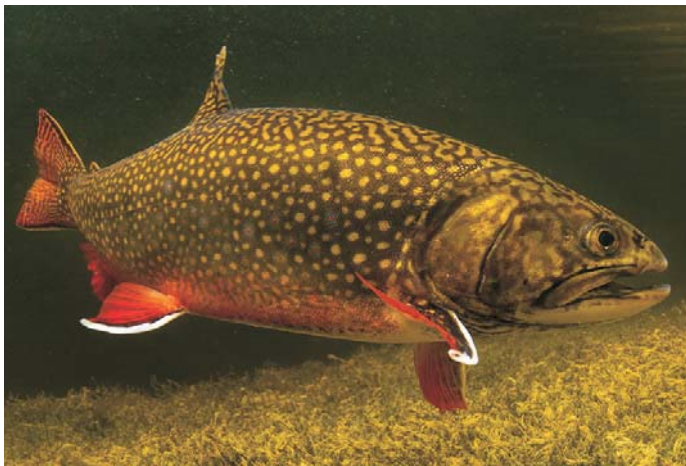


State seal



State flag



State fish, Brook trout (*Salvelinus fontinalis*).



State bird, American goldfinch (*Carduelis tristis*). Male (left) and female (right).



State flower, Common blue violet (*Viola sororia*).



State shell, Knobbed whelk (*Busycon carica gmelin*).



Newark, top, is the largest city in New Jersey, and one of the nation's major air, shipping and rail hubs. Located eight miles west of Manhattan, the city's Port Newark is the largest container shipping terminal on the East Coast, and Newark Liberty International Airport was the country's first municipal commercial airport. Great Falls, bottom, is located on the Passaic River in northern New Jersey. At 77 feet, it is the second highest waterfall on the East Coast. Great Falls was designated a National Natural Landmark in 1967, and was authorized as a National Historical Park in 2009. In 2011, it was formally dedicated at the nation's 397th park system.

Number of Days Annually With ≥ 1.0 Inch Snow Depth					
Highest			Lowest		
Rank	Station Name	Days	Rank	Station Name	Days
1	Charlotteburg Reservoir	35	1	Seabrook Farms	15
2	Somerville 3 NW	31	2	Indian Mills 2 W	17
3	Belvidere Bridge	28	2	Plainfield	17
3	Flemington 5 NNW	28	4	Hightstown 2 W	21
5	Cranford	26	4	Newark Intl Arpt	21

6	Canoe Brook	25	6	Canoe Brook	25
6	New Brunswick 3 SE	25	6	New Brunswick 3 SE	25
8	Hightstown 2 W	21	8	Cranford	26
8	Newark Intl Arpt	21	9	Belvidere Bridge	28
10	Indian Mills 2 W	17	9	Flemington 5 NNW	28

10	Plainfield	17	11	Somerville 3 NW	31
12	Seabrook Farms	15	12	Charlotteburg Reservoir	35

Population Growth Since 2000

Top 150 Places Ranked in *Descending Order*

State Rank	Percent	Place	State Rank	Percent	Place
1	320.5	Woolwich (township) Gloucester County	76	17.5	Plumsted (township) Ocean County
2	227.5	Monmouth Junction (CDP) Middlesex County	77	16.9	Lumberton (township) Burlington County
3	150.1	Mays Landing (CDP) Atlantic County	78	16.8	Tinton Falls (borough) Monmouth County
4	119.4	Princeton (borough) Mercer County	79	16.6	Florence (township) Burlington County
5	117.4	Mullica Hill (CDP) Gloucester County	79	16.6	Madison Park (CDP) Middlesex County
6	114.8	Barnegat (CDP) Ocean County	81	16.1	Millstone (township) Monmouth County
7	96.7	White House Station (CDP) Hunterdon County	82	16.0	West Amwell (township) Hunterdon County
8	95.6	East Greenwich (township) Gloucester County	83	15.8	Lyndhurst (township) Bergen County
9	93.0	Pomona (CDP) Atlantic County	84	15.3	New Brunswick (city) Middlesex County
10	72.6	Lakewood (township) Ocean County	84	15.3	West New York (town) Hudson County
11	67.9	Edgewater (borough) Bergen County	86	14.8	Galloway (township) Atlantic County
12	67.8	Mansfield (township) Burlington County	87	14.7	Lacey (township) Ocean County
13	67.3	Riverdale (borough) Morris County	88	14.6	North Brunswick (township) Middlesex County
14	63.8	Upper Freehold (township) Monmouth County	89	14.2	Wanaque (borough) Passaic County
15	59.3	Monroe (township) Middlesex County	90	13.9	Lawrence (township) Cumberland County
16	58.9	Waretown (CDP) Ocean County	91	13.8	Franklin (township) Hunterdon County
17	55.4	Heathcote (CDP) Middlesex County	92	13.7	Deptford (township) Gloucester County
18	52.6	Lakewood (CDP) Ocean County	92	13.7	Shrewsbury (borough) Monmouth County
19	51.6	Barnegat (township) Ocean County	94	13.5	Carteret (borough) Middlesex County
20	48.5	Harrison (township) Gloucester County	95	13.4	Plainsboro (township) Middlesex County
21	45.6	Hainesport (township) Burlington County	96	13.0	West Freehold (CDP) Monmouth County
22	44.9	Lopatcong (township) Warren County	97	12.9	Rio Grande (CDP) Cape May County
23	44.4	Bordentown (township) Burlington County	98	12.8	Piscataway (township) Middlesex County
24	40.6	Ocean (township) Ocean County	99	12.6	Cinnaminson (township) Burlington County
25	38.2	Egg Harbor (township) Atlantic County	100	12.5	Morris Plains (borough) Morris County
26	38.1	Hoboken (city) Hudson County	101	12.4	New Providence (borough) Union County
27	37.4	Delanco (township) Burlington County	102	12.3	Cresskill (borough) Bergen County
28	34.3	Little Egg Harbor (township) Ocean County	102	12.3	Raritan (township) Hunterdon County
29	34.0	Jackson (township) Ocean County	104	12.2	Middle (township) Cape May County
30	33.5	Little Falls (township) Passaic County	105	12.1	Manchester (township) Ocean County
31	32.3	Florham Park (borough) Morris County	105	12.1	South Amboy (city) Middlesex County
31	32.3	Montgomery (township) Somerset County	107	12.0	Rahway (city) Union County
33	31.7	Ocean Acres (CDP) Ocean County	107	12.0	Woodbridge (CDP) Middlesex County
34	30.8	Dayton (CDP) Middlesex County	109	11.9	Fort Dix (CDP) Burlington County
35	30.0	South Harrison (township) Gloucester County	109	11.9	Winslow (township) Camden County
36	29.7	Secaucus (town) Hudson County	111	11.6	Buena (borough) Atlantic County
37	29.2	Franklin (township) Somerset County	111	11.6	Hopewell (township) Mercer County
38	29.0	Leisuretowne (CDP) Burlington County	111	11.6	Lawrence (township) Mercer County
39	28.9	Budd Lake (CDP) Morris County	114	11.5	Strathmore (CDP) Monmouth County
39	28.9	Pine Ridge at Crestwood (CDP) Ocean County	115	11.4	Burlington (township) Burlington County
41	28.2	West Windsor (township) Mercer County	115	11.4	East Rutherford (borough) Bergen County
42	27.3	Monroe (township) Gloucester County	115	11.4	Hammonton (town) Atlantic County
43	27.0	Harrison (town) Hudson County	115	11.4	Hanover (township) Morris County
44	26.6	Hardyston (township) Sussex County	119	11.3	Metuchen (borough) Middlesex County
45	26.1	Hamilton (township) Atlantic County	120	11.0	Mansfield (township) Warren County
46	25.7	Chesterfield (township) Burlington County	121	10.9	Absecon (city) Atlantic County
46	25.7	Swedesboro (borough) Gloucester County	121	10.9	Fredon (township) Sussex County
48	25.4	Greenwich (township) Warren County	123	10.8	East Newark (borough) Hudson County
49	24.1	Weymouth (township) Atlantic County	123	10.8	Rockaway (township) Morris County
50	23.6	Raritan (borough) Somerset County	125	10.4	Cliffside Park (borough) Bergen County
51	23.3	Mount Arlington (borough) Morris County	125	10.4	Freehold (township) Monmouth County
52	22.9	Plainsboro Center (CDP) Middlesex County	125	10.4	White (township) Warren County
53	22.8	Netcong (borough) Morris County	128	10.3	Bernards (township) Somerset County
53	22.8	Stafford (township) Ocean County	129	10.2	Edgewater Park (township) Burlington County
55	22.7	Berlin (borough) Camden County	129	10.2	Roseland (borough) Essex County
56	22.5	Golden Triangle (CDP) Camden County	129	10.2	Warren (township) Somerset County
56	22.5	Green Brook (township) Somerset County	132	10.1	Northvale (borough) Bergen County
58	21.9	Old Bridge (CDP) Middlesex County	133	9.9	South Plainfield (borough) Middlesex County
59	21.7	Clayton (borough) Gloucester County	133	9.9	Woodstown (borough) Salem County
60	21.5	Echelon (CDP) Camden County	135	9.8	Franklin (township) Warren County
61	21.4	Montvale (borough) Bergen County	136	9.7	Livingston (township) Essex County
62	21.2	Cranbury (township) Middlesex County	137	9.6	Marlboro (township) Monmouth County
62	21.2	Palisades Park (borough) Bergen County	137	9.6	Sayreville (borough) Middlesex County
64	21.1	Alloway (township) Salem County	139	9.5	East Windsor (township) Mercer County
65	20.8	Springfield (township) Union County	139	9.5	Flemington (borough) Hunterdon County
66	20.6	South Brunswick (township) Middlesex County	141	9.4	Jersey City (city) Hudson County
67	20.4	Westampton (township) Burlington County	141	9.4	Kendall Park (CDP) Middlesex County
68	19.9	Williamstown (CDP) Gloucester County	143	9.3	Totowa (borough) Passaic County
69	19.7	Allamuchy (township) Warren County	143	9.3	Weehawken (township) Hudson County
70	19.5	Mount Olive (township) Morris County	145	9.1	Perth Amboy (city) Middlesex County
71	19.3	Harding (township) Morris County	146	9.0	Mahwah (township) Bergen County
72	18.7	South Hackensack (township) Bergen County	147	8.9	West Deptford (township) Gloucester County
73	18.5	Elk (township) Gloucester County	148	8.7	Beachwood (borough) Ocean County
74	18.4	Manalapan (township) Monmouth County	148	8.7	Oxford (township) Warren County
75	17.9	Wood-Ridge (borough) Bergen County	148	8.7	Pequannock (township) Morris County

Note: This section ranks incorporated places and CDPs (Census Designated Places) with populations of 2,500 or more. Unincorporated postal areas were not considered. Please refer to the User Guide for additional information.

Median Household Income

Top 150 Places Ranked in *Descending Order*

State Rank	Dollars	Place
1	250,000+	Millburn (township) Essex County
1	250,000+	Short Hills (CDP) Essex County
3	230,682	Ho-Ho-Kus (borough) Bergen County
4	225,208	Mountain Lakes (borough) Morris County
5	222,237	Rumson (borough) Monmouth County
6	214,726	Upper Montclair (CDP) Essex County
7	211,091	Glen Ridge (borough) Essex County
8	204,018	Blackwells Mills (CDP) Somerset County
9	202,875	Little Silver (borough) Monmouth County
10	202,000	Chatham (township) Morris County
11	201,923	Chatham (borough) Morris County
12	200,150	Montgomery (township) Somerset County
13	198,542	Upper Saddle River (borough) Bergen County
14	197,950	Mendham (borough) Morris County
15	197,632	Woodcliff Lake (borough) Bergen County
16	188,750	North Caldwell (borough) Essex County
17	184,500	Chester (township) Morris County
18	184,201	Fair Haven (borough) Monmouth County
19	181,500	Haworth (borough) Bergen County
20	180,729	Berkeley Heights (township) Union County
21	180,601	Tenafly (borough) Bergen County
22	178,958	Ridgewood (village) Bergen County
23	178,794	Franklin Lakes (borough) Bergen County
24	178,607	Glen Rock (borough) Bergen County
25	177,500	Millstone (township) Monmouth County
26	176,591	Colts Neck (township) Monmouth County
27	175,568	Cranbury (township) Middlesex County
28	173,490	Old Tappan (borough) Bergen County
29	172,793	Martinsville (CDP) Somerset County
30	171,894	Mendham (borough) Morris County
31	171,023	Fanwood (borough) Union County
32	170,076	West Windsor (township) Mercer County
33	169,773	Richwood (CDP) Gloucester County
34	169,094	Robertsville (CDP) Monmouth County
35	169,018	Saddle River (borough) Bergen County
36	168,120	Livingston (township) Essex County
37	168,098	Green Brook (township) Somerset County
38	166,538	Bridgewater Center (CDP) Somerset County
39	162,976	Fairview (CDP) Monmouth County
40	162,885	Troy Hills (CDP) Morris County
41	162,095	Wyckoff (township) Bergen County
42	162,012	Belle Mead (CDP) Somerset County
43	161,974	Warren (township) Somerset County
44	161,655	Bernardsville (borough) Somerset County
45	161,621	East Freehold (CDP) Monmouth County
46	161,496	Robbinsville Center (CDP) Mercer County
47	161,250	River Vale (township) Bergen County
48	160,611	Morris (township) Morris County
49	158,323	Westfield (town) Union County
50	158,042	Englewood Cliffs (borough) Bergen County
51	157,958	Allendale (borough) Bergen County
52	157,379	Pines Lake (CDP) Passaic County
53	157,293	Marlboro (township) Monmouth County
54	157,188	Madison (borough) Morris County
55	156,164	Lincroft (CDP) Monmouth County
56	156,146	Moorestown (township) Burlington County
57	156,058	Ramsey (borough) Bergen County
58	156,042	Montvale (borough) Bergen County
59	155,762	Hillsdale (borough) Bergen County
60	153,558	Demarest (borough) Bergen County
61	153,438	Hoboken (city) Hudson County
62	153,178	Springdale (CDP) Camden County
63	151,973	Bernards (township) Somerset County
64	151,938	Robbinsville (township) Mercer County
65	151,579	Haddonfield (borough) Camden County
66	151,034	Bradley Gardens (CDP) Somerset County
67	150,817	South Orange Village (township) Essex County
68	150,422	Randolph (township) Morris County
69	149,934	Chesterfield (township) Burlington County
70	149,718	New Providence (borough) Union County
71	149,583	Washington (township) Morris County
72	149,568	Maplewood (township) Essex County
73	149,375	Kinnelon (borough) Morris County
74	149,015	Brielle (borough) Monmouth County
75	148,596	Upper Freehold (township) Monmouth County

State Rank	Dollars	Place
76	147,722	Green (township) Sussex County
77	147,662	Harrison (township) Gloucester County
78	147,578	Greenwich (CDP) Warren County
79	146,864	Branchburg (township) Somerset County
80	146,432	Cedar Grove (township) Essex County
81	146,127	Princeton (borough) Mercer County
82	145,824	Clinton (township) Hunterdon County
83	145,588	Barclay (CDP) Camden County
84	145,050	Boonton (township) Morris County
85	144,685	Denville (township) Morris County
86	144,474	Oradell (borough) Bergen County
87	143,947	Closter (borough) Bergen County
88	143,240	Kingwood (township) Hunterdon County
89	143,103	Park Ridge (borough) Bergen County
90	142,964	Succasunna (CDP) Morris County
91	142,870	Shrewsbury (borough) Monmouth County
92	142,845	Summit (city) Union County
93	142,776	Roseland (borough) Essex County
94	142,587	Montville (township) Morris County
95	142,500	Washington (township) Bergen County
96	142,422	The Hills (CDP) Somerset County
97	142,353	Packanack Lake (CDP) Passaic County
98	141,706	Cresskill (borough) Bergen County
99	141,197	Harding (township) Morris County
100	140,777	White Meadow Lake (CDP) Morris County
101	140,709	Holmdel (township) Monmouth County
102	140,417	Watchung (borough) Somerset County
103	140,074	Oakland (borough) Bergen County
104	139,664	Scotch Plains (township) Union County
105	139,313	Hillsborough (township) Somerset County
106	139,306	Bethlehem (township) Hunterdon County
107	138,889	Kendall Park (CDP) Middlesex County
108	138,378	Tewksbury (township) Hunterdon County
109	138,087	Bridgewater (township) Somerset County
110	137,675	Hopewell (township) Mercer County
111	137,373	Delaware (township) Hunterdon County
112	137,372	Sparta (township) Sussex County
113	137,152	Greenwich (township) Warren County
114	137,083	Strathmore (CDP) Monmouth County
115	136,542	Long Hill (township) Morris County
116	136,067	Metuchen (borough) Middlesex County
117	135,750	Harrington Park (borough) Bergen County
118	135,122	Verona (township) Essex County
119	135,074	Fredon (township) Sussex County
120	135,000	Pennington (borough) Mercer County
121	134,524	Woolwich (township) Gloucester County
122	134,420	Bargaintown (CDP) Atlantic County
123	134,308	Montclair (township) Essex County
124	133,796	Medford (township) Burlington County
125	133,780	Moorestown-Lenola (CDP) Burlington County
126	133,088	Ramtown (CDP) Monmouth County
127	132,817	Beckett (CDP) Gloucester County
128	132,539	Cranford (township) Union County
129	131,563	Norwood (borough) Bergen County
130	130,815	West Caldwell (township) Essex County
131	130,663	Manalapan (township) Monmouth County
132	130,273	Paramus (borough) Bergen County
133	130,267	Edgewater (borough) Bergen County
134	130,260	East Amwell (township) Hunterdon County
135	130,076	Green Knoll (CDP) Somerset County
136	130,063	Greentree (CDP) Camden County
137	129,965	Fair Lawn (borough) Bergen County
138	129,289	Emerson (borough) Bergen County
139	128,558	Brookdale (CDP) Essex County
140	128,231	River Edge (borough) Bergen County
141	128,214	Franklin (township) Hunterdon County
142	127,977	East Hanover (township) Morris County
143	127,847	Westwood (borough) Bergen County
144	127,623	Wayne (township) Passaic County
145	127,612	South Harrison (township) Gloucester County
146	127,574	Waldwick (borough) Bergen County
147	127,234	Alexandria (township) Hunterdon County
148	127,021	Morris Plains (borough) Morris County
149	126,875	Yorketown (CDP) Monmouth County
150	126,765	Hillsborough (CDP) Somerset County

Rankings

Note: This section ranks incorporated places and CDPs (Census Designated Places) with populations of 2,500 or more. Unincorporated postal areas were not considered. Please refer to the User Guide for additional information.



Start Strong State Summary Report
English Language Arts - 09 SY - 2021-2022

The Start Strong assessments in English Language Arts, Math, and Science were administered in fall 2021 to meet federal assessment administration requirements for the 2020-2021 school year. The grade levels shown in the report represent students' fall 2021 grade-level enrollment. Please note, as per the design of the Start Strong assessments, students were assessed on grade- or course-level content from the prior year.

Subgroup	Percent of Valid Scores	Strong Support Needed (in Percent)	Some Support Needed (in Percent)	Less Support Needed (in Percent)
ELL	5.3	75	11	14
Current ELL	4.4	81	9	10
Former ELL	1.3	46	18	37
Students With Disabilities	15.2	61	15	24
Economically Disadvantaged	28.7	45	16	39
Non-Econ. Disadvantaged	71.3	26	14	59
SE Accommodation	13.9	57	15	29

Keys:
 1 Pacific Islander: Students who are Native Hawaiian or Other Pacific Islander
 2 Other: Students who did not have Ethnicity coded and students with multiple non-Hispanic Ethnicities coded
 * Data is suppressed to protect the confidentiality of the students